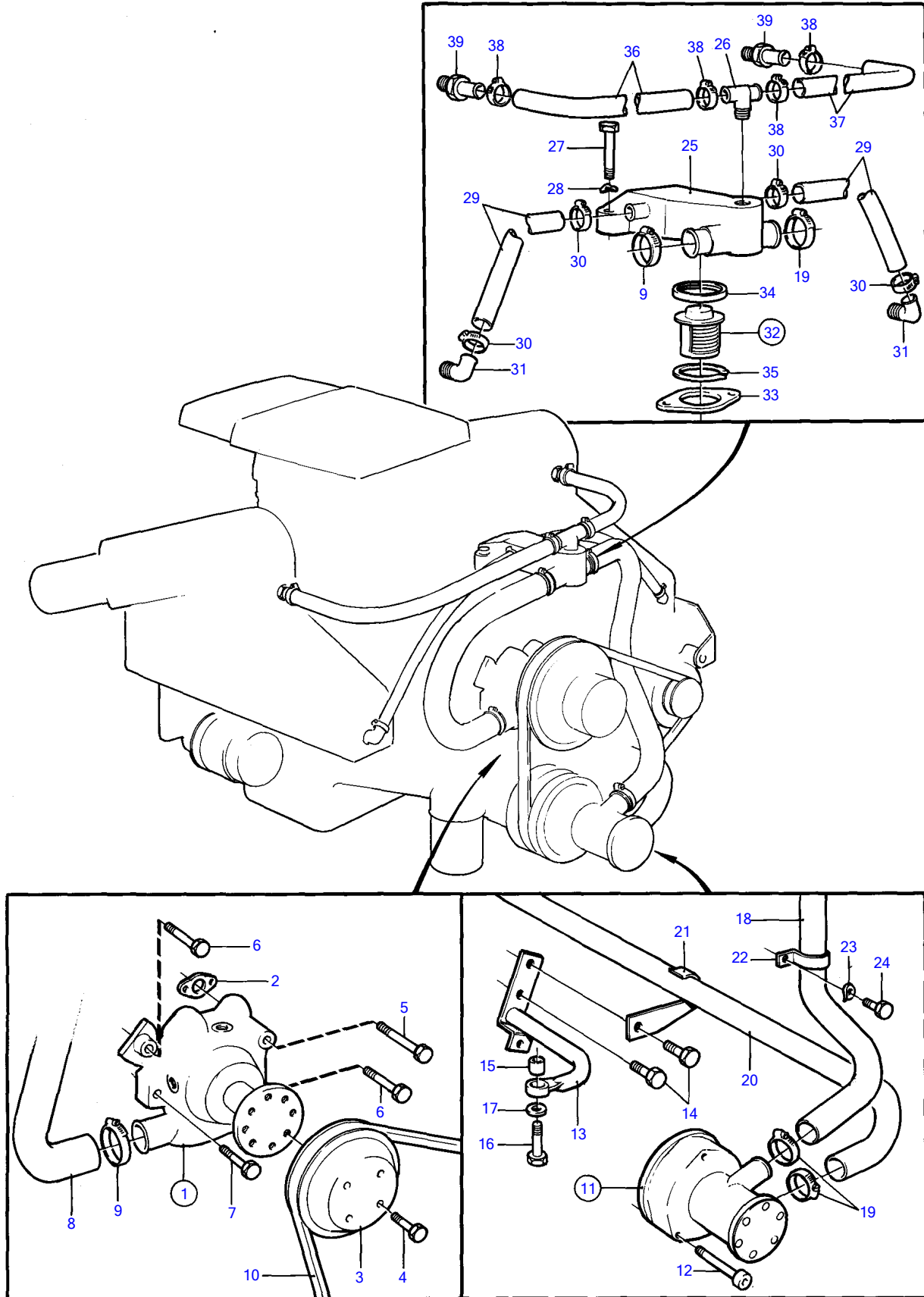


432A, 434A



11249

Upd:2014-10-28

11249

7736260-26-12502

432A, 434A

| REF | PART NO. | QTY | DESCRIPTION | SEE SEC. | NOTES |
|-----|----------|-----|--------------------|----------------------|--|
| 1 | 856364 | 1 | Water pump | | |
| 2 | 835210 | 2 | • Gasket | | |
| 3 | 855283 | 1 | Pulley | | |
| 4 | (955655) | 4 | Hexagon screw | | Obsolete part |
| 5 | 940162 | 1 | Hexagon screw | | |
| 6 | 955536 | 2 | Hexagon screw | | |
| 7 | 955540 | 1 | Hexagon screw | | |
| 8 | 834906 | 1 | Hose | | |
| 9 | 961671 | 2 | Hose clamp | | |
| 10 | 967122 | 1 | V-belt | | See group 3 |
| 11 | 857451 | 1 | Sea water pump | | |
| 11 | | | Bulletin P-26-6-5 | P-26-6-5-EN 12498 | New seawater pump kits |
| 12 | 948324 | 3 | Hex. socket screw | | |
| 13 | 857355 | 1 | Stay | | |
| 14 | 944209 | 2 | Flange screw | | L=25mm |
| 15 | 826422 | 1 | Rubber bushing | | |
| 16 | 955523 | 1 | Hexagon screw | | |
| 17 | 960141 | 1 | Washer | | |
| 18 | 826423 | 1 | Hose | | |
| 19 | 961669 | 3 | Hose clamp | | |
| 20 | (857038) | 1 | Hose | | Obsolete part, Intake-sea water pump |
| 21 | (855567) | 1 | Attaching clamp | | Obsolete part |
| | (855568) | 1 | Attaching clamp | | Obsolete part, Installs on the flywheel cover. |
| | 857045 | 1 | Attaching clamp | | For hose 857038. |
| 22 | 841307 | 1 | Clamp | | |
| 23 | 942336 | 1 | Spring washer | | |
| 24 | 955534 | 1 | Hexagon screw | | |
| 25 | 857068 | 1 | Thermostat housing | | |
| 26 | 857067 | 1 | T-stud | | |
| 27 | 955537 | 2 | Hexagon screw | | |
| 28 | 942336 | 2 | Spring washer | | |
| 29 | 952970 | X | Hose | | L=2X350mm |
| 30 | 961666 | 4 | Hose clamp | | |
| 31 | 961610 | 2 | Hose nipple | 12486 | |
| 32 | 876305 | 1 | Thermostat kit | | 62°C |
| 33 | 835417 | 1 | • Gasket | | |
| 34 | 416033 | 1 | • Sealing ring | | |
| 35 | 855486 | 1 | Lock ring | | |
| 36 | 952970 | X | Hose | | P, L=440mm |
| 37 | 952970 | X | Hose | | S.B, L=380mm |
| 38 | 961666 | 4 | Hose clamp | | |
| 39 | 942691 | 2 | Hose nipple | 12486 | |